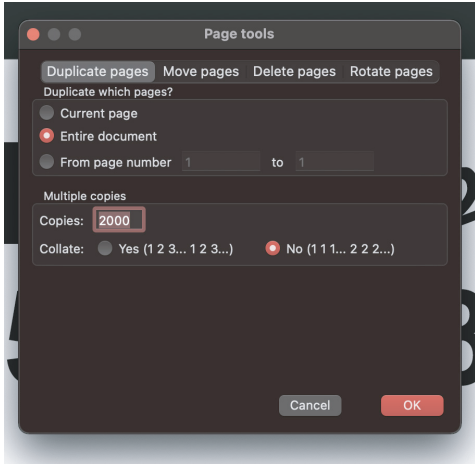
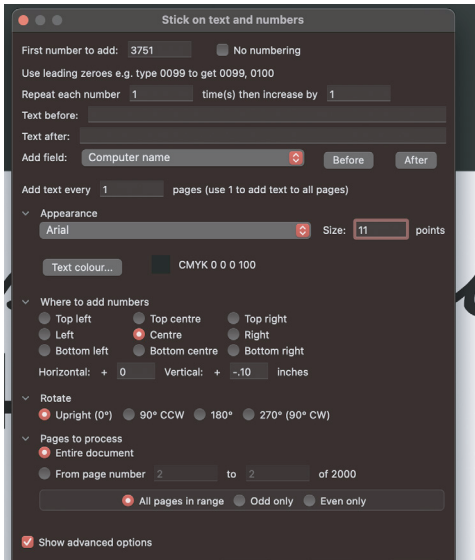


Quite Impose Custom For Labels

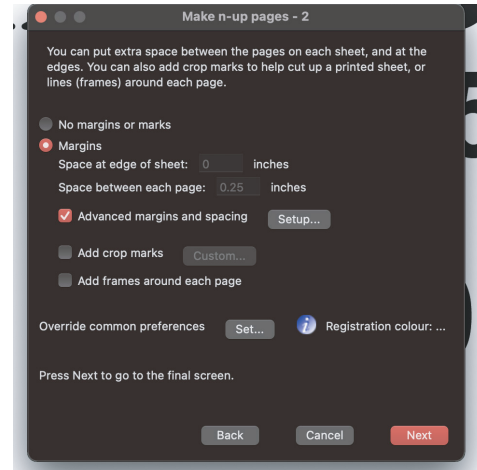
1. Insert # of pages for the # of labels you need, For example, 2,000 labels would need 2,000 pages inserted.



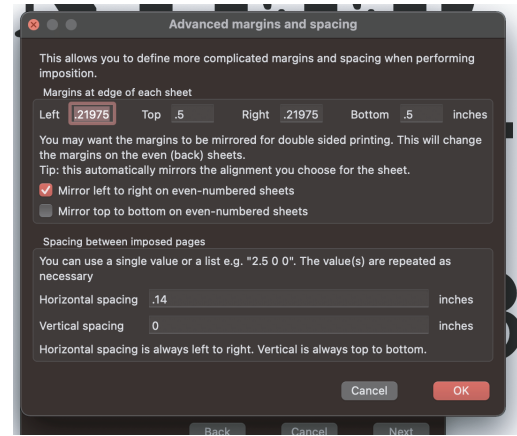
2. Tack on numbers, use the starting number, in this example, the starting number was 30039. For this one, I used Arial at 11 Points. I choose Center and used Horizontal 0 and Vertical at -.10.



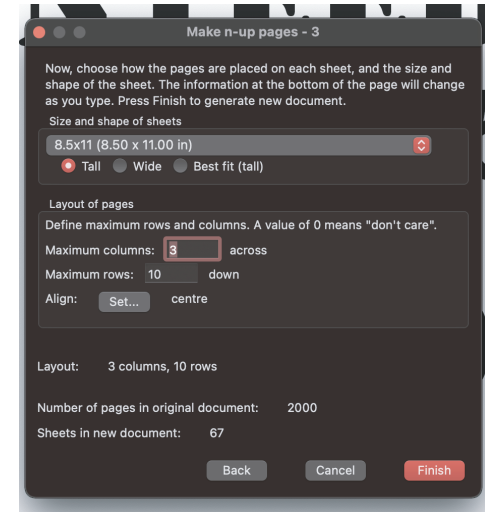
3. I choose n-up with the advance settings and set it up using the table below.



4. Then I set it up using the info from the label specs from Online Labels, See below screenshot and spec sheet.



5. I choose 8 1/2x11 with 3 across and 10 down. Then Finish



This can work for all labels, you can choose N-up or even step and repeat for those that are not numbered, etc. You just adjust for that specific label.

Template OL875 2 5/8 x 1 Specifications

Description:	OL875 - 2.625" x 1" template provided free to customers of OnlineLabels.com.		
Sheet Size:	8.5" x 11"	Labels Per Sheet:	30
Width:	2.5935"	Height:	1"
Top Margin:	0.5"	Bottom Margin:	0.5"
Left Margin:	0.21975"	Right Margin:	0.21975"
Horizontal Spacing:	0.14"	Vertical Spacing:	0"
Horizontal Pitch:	2.7335"	Vertical Pitch:	1"

3x10 = 30 up